

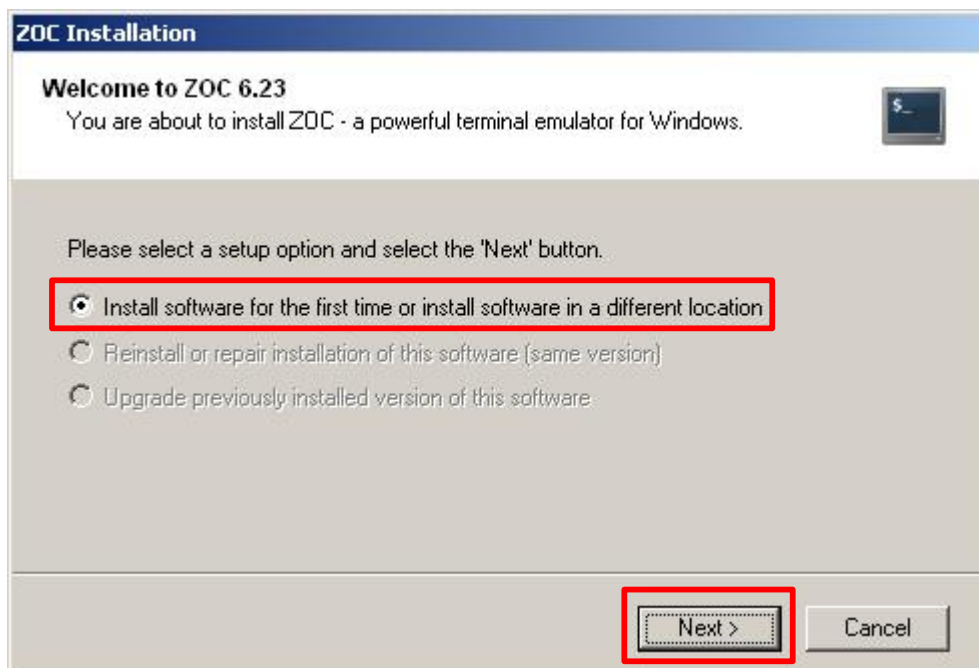
Note from EmTec: This document was written by one of our users. We found it well done and helpful thus provide it here with our own documentation.

## INSTALLING ZOC ON A PORTABLE DRIVE

Double click the installation file at Windows Explorer or select it at the Start Menu/Run...



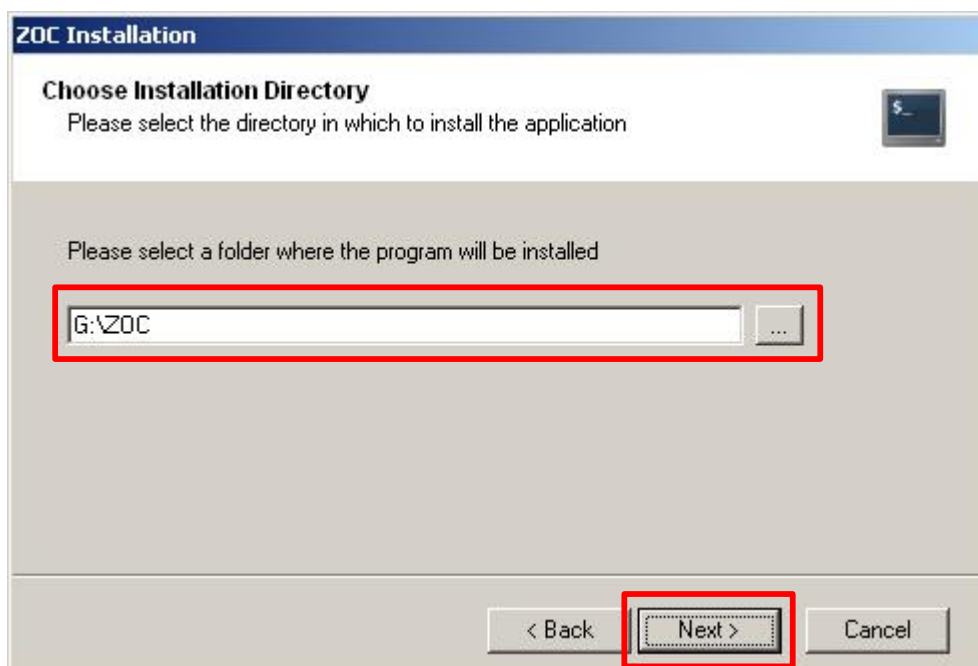
The following window will appear, click next:



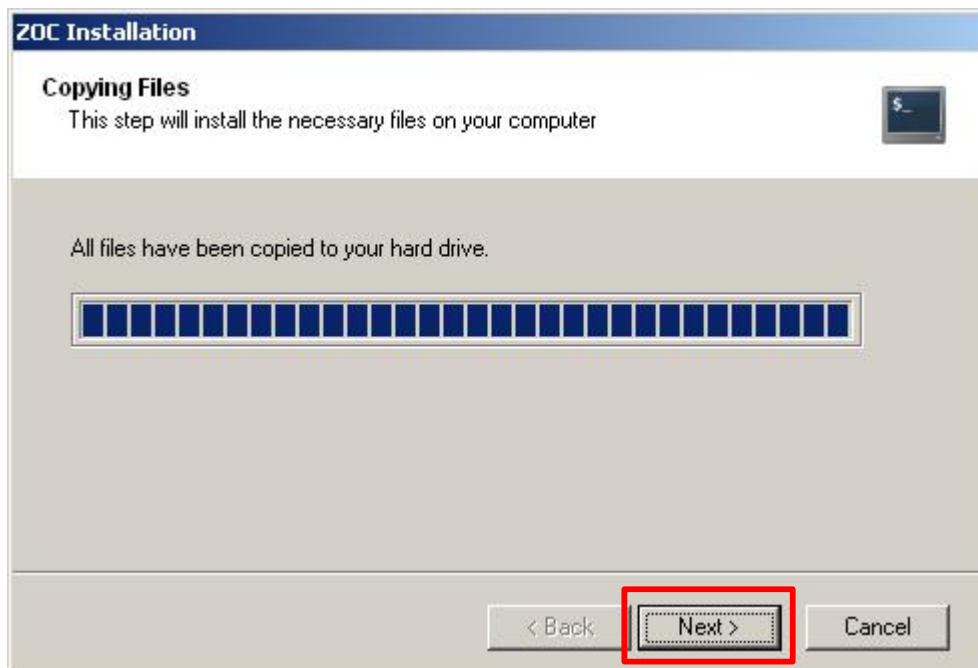
Read the license agreement and select “Accept end user license agreement”, then click next:



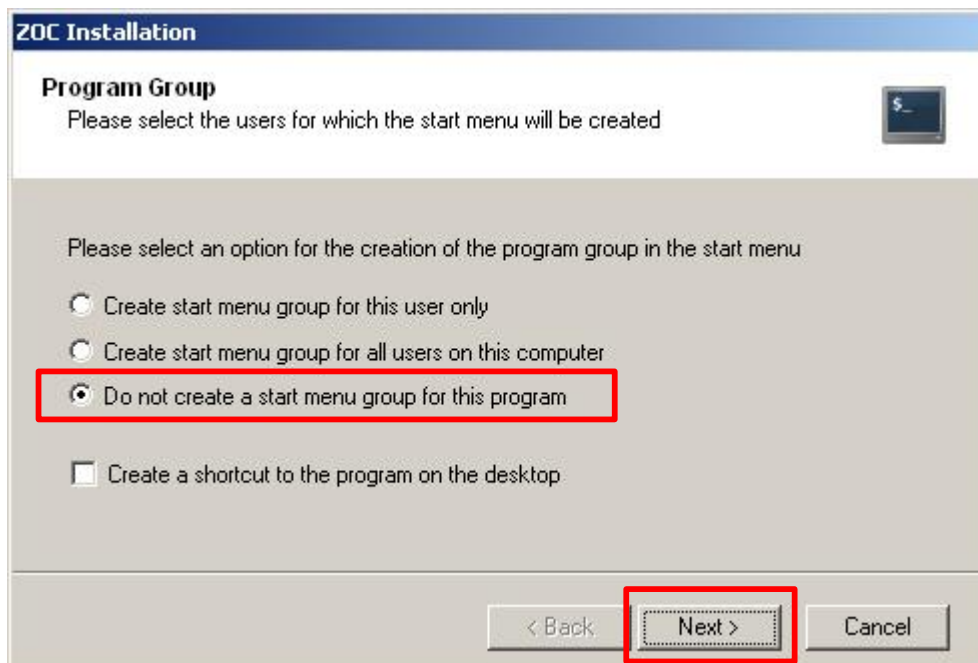
In the next Windows, you will have to choose your pendrive or the medium where you want to install ZOC. Installing to a pendrive gives you mobility, allowing to have all your keys and IP addresses from your Servers in your pocket. Select the drive letter from your pendrive then click next:



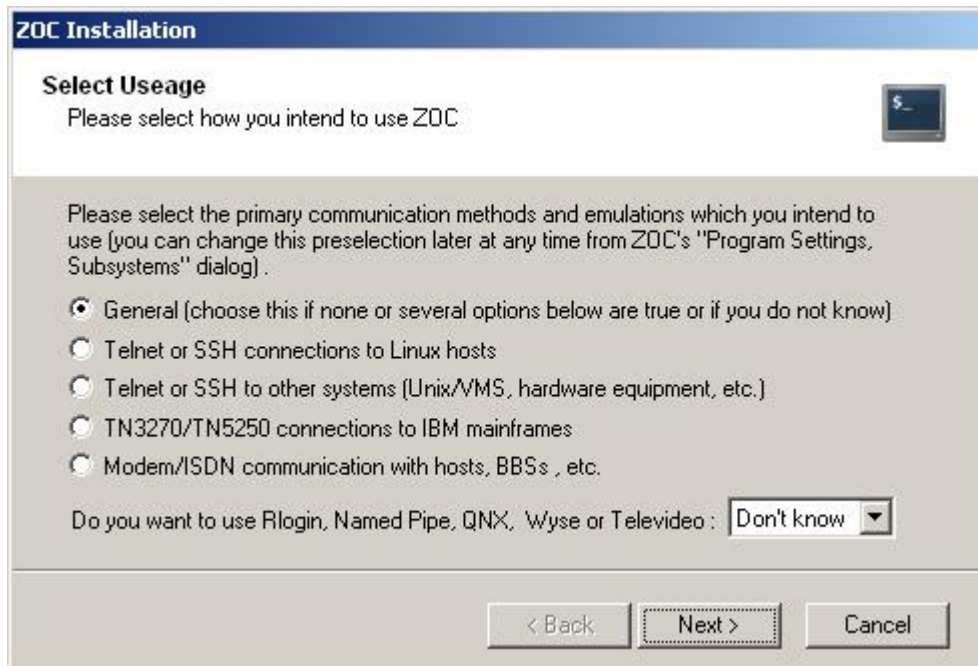
Now just wait for the installation to finish. The process is really quick. After that, click next:



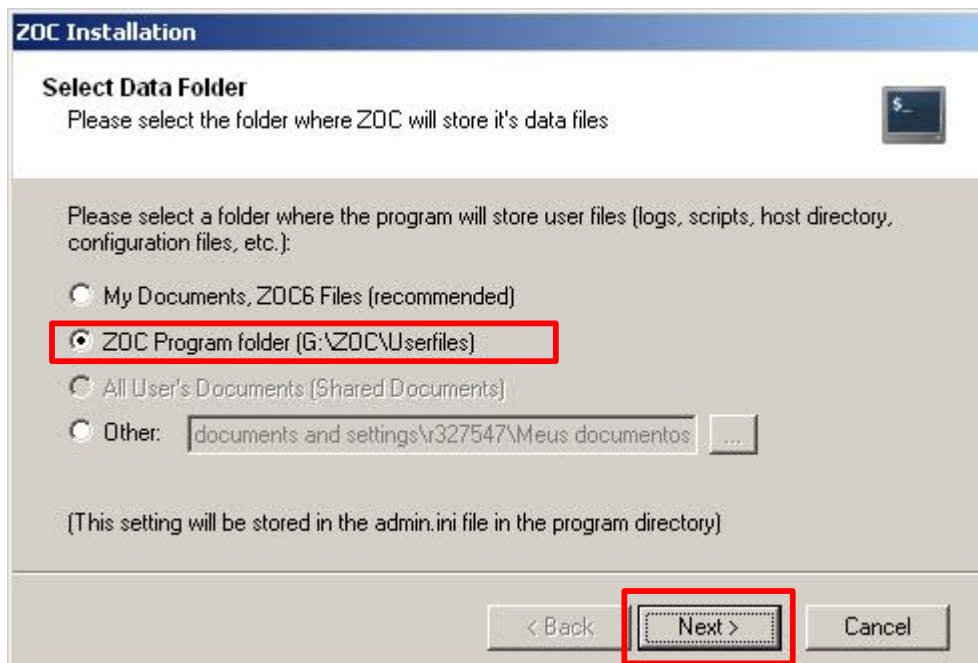
The next window will let you choose whether or not to create Start Menu group. I choose not to create because it was installed on the pendrive and I want to start it on any computer. Select the options like the window below then click next:



The next window allow you to select between the connection methods, I choose general:



This is the most important part of this how-to, because is where you choose where you want to store your configuration files. Of course to be mobile we will have to choose the second option, “ZOC Program Folder (G:\ZOC\Userfiles)”. In your case may be different depending on the drive letter, choose next:



Now we are ready to GO, click done.



Now everything is ok, ZOC is ready to use and you can start adding new Servers to the host directory, but before you Begin we have to adjust the G:\ZOC\admin.ini (remember to change G:\ZOC to the drive letter and directory name you've choose earlier). Open the file G:\ZOC\admin.ini in notepad then search for the following line:

```
ConfigDataFolder=....
```

Because you will use ZOC on others computers, make sure the is no drive letter because the drive letter could be the same, but probably not, so we will change it to work in any computer and any drive letter, the line needs to be changed to the following:

```
ConfigDataFolder="%ZOC%\Userfiles"
```

This will make ZOC load the configuration from the ZOC program folder, no matter what the drive letter is.

When you register the product and when you received your license code, the license can also be added to the admin.ini file. To do this, add a new line somewhere near the bottom of the file (obviously you will need to replace *aaaaa* and *bbbbb* the the respective numbers from your license code)

```
LicenseCode="aaaaa/aaaaa/aaaaa bbbbbb/bbbbbb"
```

Save the file and open ZOC. Open the Start Menu/Run... and choose the application like show below and click OK:

